

Trauma and Injury Intelligence Group Biannual Bulletin

North Manchester General Hospital Emergency Department
October 2014 to September 2015

December 2015



Centre for Public Health,
Faculty of Education, Health and Community,
Liverpool John Moores University,
Henry Cotton Campus,
15-21 Webster Street,
Liverpool, L3 2ET

cph.org.uk

0151 231 4500

tiig@ljmu.ac.uk

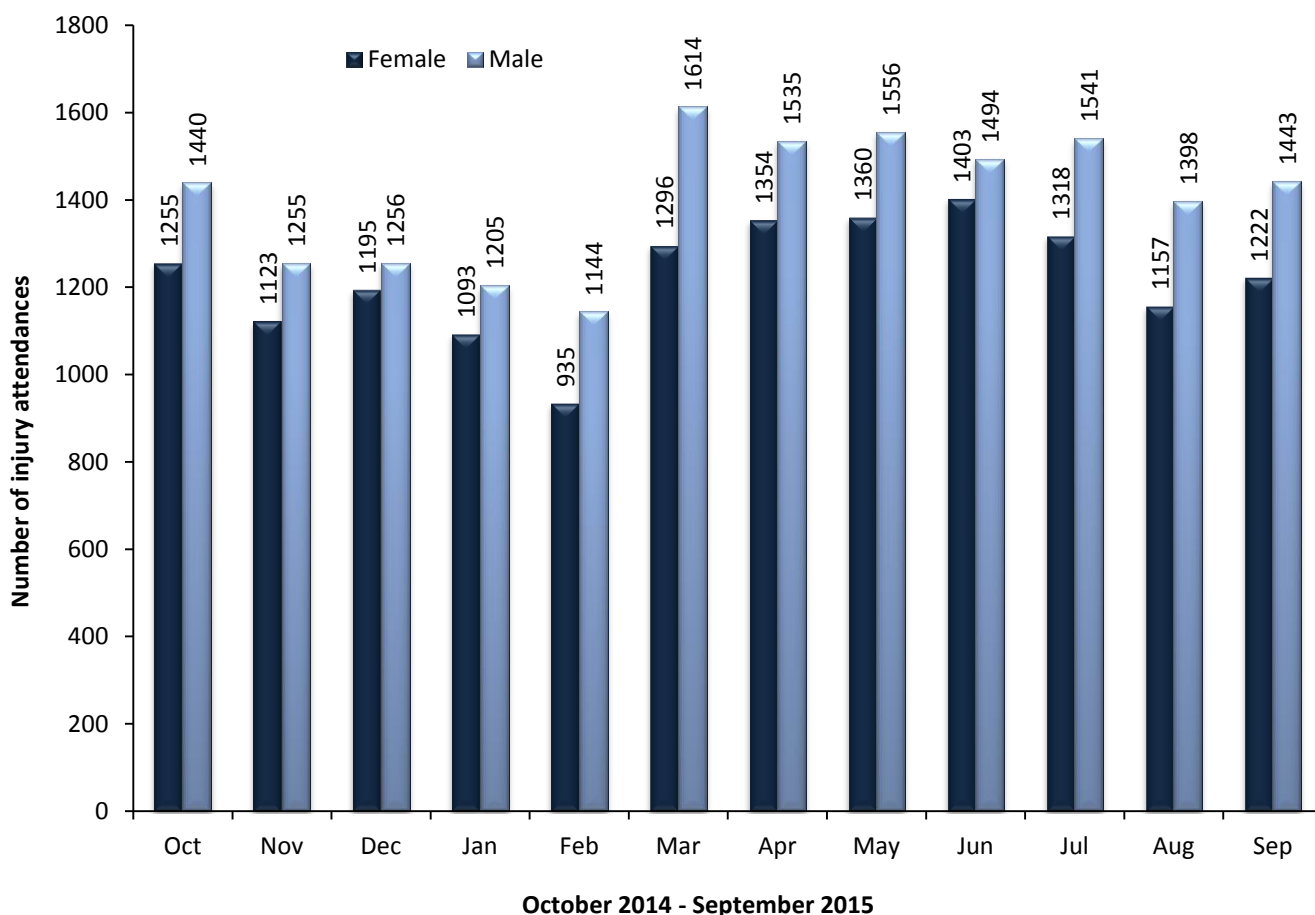
tiig.info

twitter.com/tiig_cph

ALL INJURY ATTENDANCES

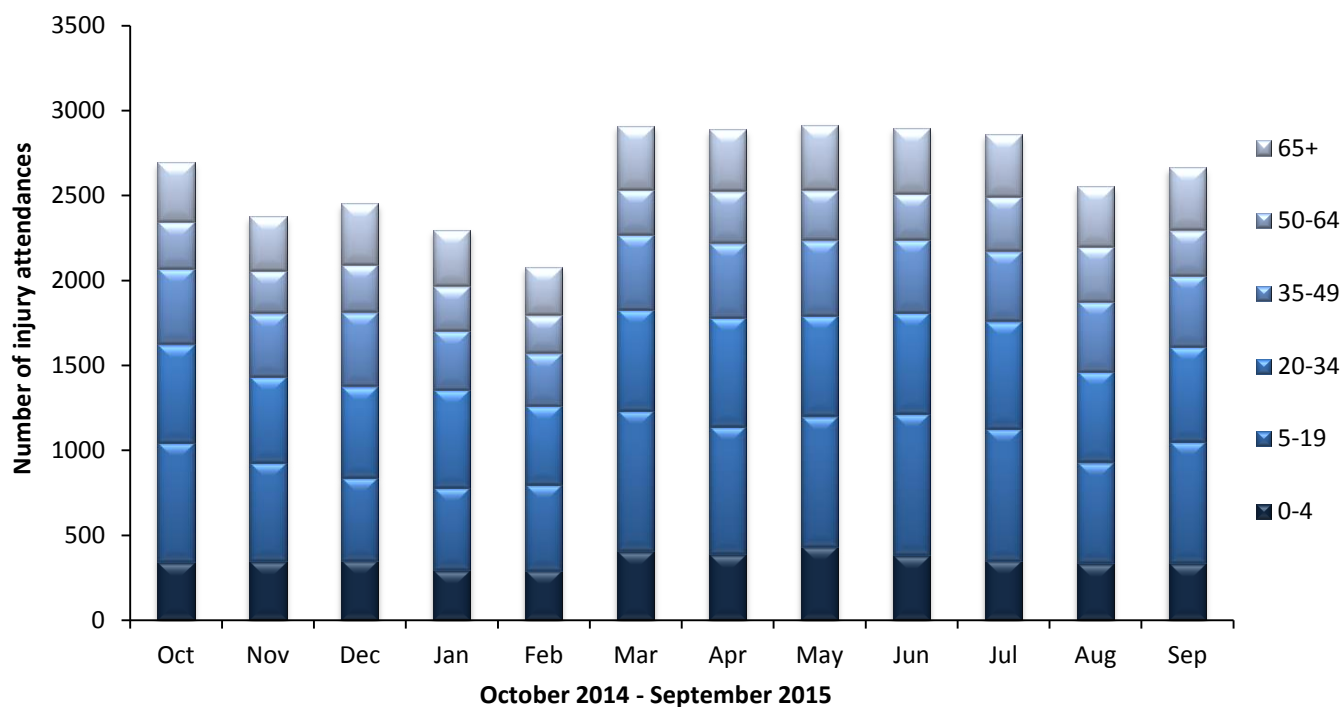
This bulletin provides a breakdown of all injury attendances to North Manchester General Hospital Emergency Department (ED) between October 2014 and September 2015. During this twelve month period there were 31,592 injury attendances to the ED. The month with the highest attendances, calculated as a daily average, was June 2015 (97 per day), while both January and February 2015 had the fewest attendances (74 per day). Males accounted for over half (53%) of all injury attendances (figure 1).

Figure 1: ED injury attendances by gender and month, October 2014 to September 2015



The highest proportions of attendances were for people aged between 5 and 19 years (25%) and between 20 and 34 years (22%; figure 2).

Figure 2: ED injury attendances by age group and month, October 2014 to September 2015[§]



[§]There were less than five records where the age was unknown; these have been omitted from the chart.

The majority (61%) of attendances were recorded as 'other' injuries. Falls accounted for 23% of injury attendances, 7% were sustained from road traffic collisions (RTCs) and 4% from assaults (table 1).

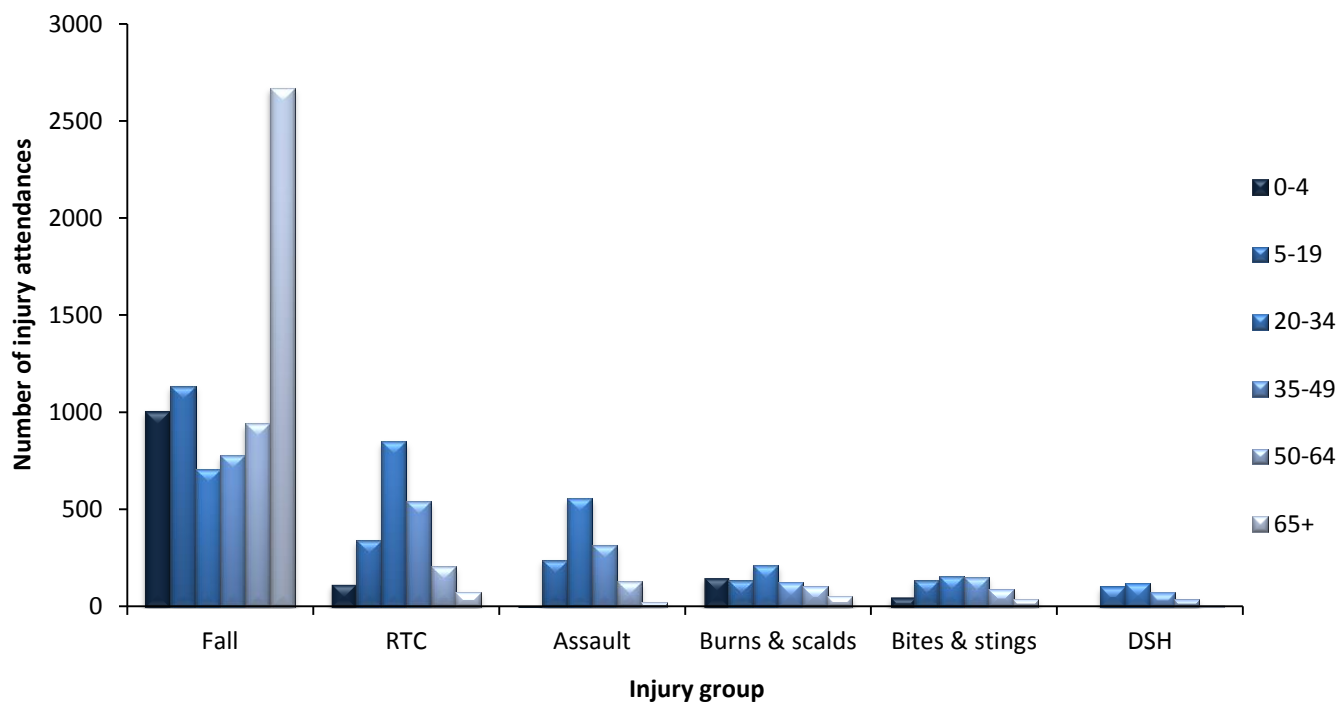
Table 1: ED injury attendances by injury group and month, October 2014 to September 2015[^]

Injury group	Oct	Nov	Dec	Jan	Feb	Mar	Apr	May	Jun	Jul	Aug	Sep	Total	%
Other injury	1711	1433	1351	1299	1234	1888	1859	1832	1698	1772	1504	1616	19197	61
Fall	546	509	631	553	494	610	604	611	733	670	630	653	7244	23
RTC	209	189	228	209	142	183	164	177	174	138	153	165	2131	7
Assault	86	114	101	110	92	104	96	123	128	116	114	91	1275	4
Burns & scalds	59	62	72	68	54	58	62	70	82	71	67	57	782	2
Bites & stings	57	46	32	27	37	41	76	66	56	68	64	56	626	2
DSH	27	25	36	32	26	26	28	37	26	24	23	27	337	1
Total	2695	2378	2451	2298	2079	2910	2889	2916	2897	2859	2555	2665	31592	100

[^]Due to low numbers other injury includes electrical accident (n=35) and sports injury (n=13), and assault includes stabbing (n=40) records.

Over a third (37%) of fall attendees were aged 65 years and over and just four in ten (44%) assault attendees were aged between 20 and 34 years. Two thirds (66%) of deliberate self-harm (DSH) attendees were aged between 5 and 34 years (figure 3).

Figure 3: ED injury attendances by age group and injury group (excluding other injury), October 2014 to September 2015[†]



[†] There were less than five records where the age was unknown; these have been omitted from the chart.

Table 2 shows the incident location of injury attendances. Over half (52%) of injuries occurred in the home, 13% occurred in a public place, 6% occurred at an educational establishment and 4% occurred at work. Seven in ten (70%) DSH injuries and almost six in ten (57%) falls occurred in the home.

Table 2: ED injury attendances by location of incident and injury group, October 2014 to September 2015^{1,^}

Incident location	Assault		Burns & scalds		Bites & stings		DSH		Fall		Other injury		RTC		Total	
	n	%	n	%	n	%	n	%	n	%	n	%	n	%	n	%
Home	255	20	444	57	312	50	235	70	4130	57	10955	57	48	2	16379	52
Other	322	25	70	9	96	15	57	17	721	10	3053	16	1984	93	6303	20
Public place	551	43	21	3	151	24	28	8	1503	21	1851	10	44	2	4149	13
Educational establishment	41	3	6	1	***	0	<10	2	376	5	1342	7	0	0	1776	6
Work	76	6	52	7	<35	5	***	1	165	2	944	5	5	0	1275	4
Not recorded	30	2	189	24	33	5	7	2	349	5	1052	5	50	2	1710	5
Total	1275	100	782	100	626	100	337	100	7244	100	19197	100	2131	100	31592	100

[^]Due to low numbers other injury includes electrical accident (n=35) and sports injury (n=13), and assault includes stabbing (n=40) records.

Table 3 shows the ethnicity of attendees to North Manchester General Hospital ED. Almost three quarters (74%) were White, 8% were Pakistani and 5% were Black.

¹ Please note that for all tables, all numbers less than five have been suppressed (***) in line with patient confidentiality. If there is only one number less than five in a category then two numbers will be suppressed to prevent back calculation from totals.

Table 3: ED injury attendances by ethnicity and month, October 2014 to September 2015^{1,2}

Ethnicity	Oct	Nov	Dec	Jan	Feb	Mar	Apr	May	Jun	Jul	Aug	Sep	Total	%
White	2024	1718	1730	1673	1544	2131	2165	2150	2154	2174	1904	2017	23384	74
Pakistani	202	199	219	204	145	209	186	246	243	198	189	182	2422	8
Black	131	125	157	109	109	145	161	160	148	127	122	135	1629	5
Any other ethnic group	110	118	113	115	86	95	130	146	116	102	103	115	1349	4
Not stated	110	81	80	90	70	150	82	63	76	98	96	98	1094	3
Mixed	41	70	66	45	53	75	71	76	71	65	63	61	757	2
Asian other	<40	39	43	39	30	<55	51	33	55	50	43	30	504	2
Indian	20	16	25	12	25	28	19	19	14	18	19	13	228	1
Chinese	10	6	15	6	<10	22	19	<15	16	<20	12	9	154	0
Not recorded	***	***	***	***	***	***	***	***	***	7	***	***	36	0
Bangladeshi	6	***	***	***	6	0	***	6	***	***	***	***	35	0
Total	2695	2378	2451	2298	2079	2910	2889	2916	2897	2859	2555	2665	31592	100

The disposal of a patient can give an indication of the severity of the injuries sustained. Just over six in ten (61%) attendees were discharged with no follow-up treatment required, almost three in ten (27%) were referred for further treatment and 10% were admitted to hospital (table 4).

Table 4: ED injury attendances by disposal method and month, October 2014 to September 2015³

Disposal method	Oct	Nov	Dec	Jan	Feb	Mar	Apr	May	Jun	Jul	Aug	Sep	Total	%
Discharged	1606	1454	1521	1417	1283	1669	1702	1839	1831	1741	1577	1653	19293	61
Referral/follow-up	815	644	614	576	543	926	826	757	760	793	693	726	8673	27
Admitted	244	254	264	269	226	291	311	264	261	280	235	239	3138	10
Other	30	26	52	36	27	24	50	56	45	45	50	47	488	2
Total	2695	2378	2451	2298	2079	2910	2889	2916	2897	2859	2555	2665	31592	100

Over three quarters (77%) of RTC attendees were discharged with no follow-up treatment required and 41% of burn and scald attendees were referred for further treatment (table 5).

² White = Irish, British, other White background; Mixed = White and Black, White and Asian, mixed - any other; Black = African, Caribbean, other Black.

³ Admitted = admitted to hospital bed; Discharged = discharged - did not require any follow-up treatment; Referral/follow-up = discharged - follow-up treatment to be provided by GP, referred to ED clinic, referred to fracture clinic, referred to other out-patient clinic, transferred to other health care provider; Other = died in department, left department before being treated, left department having refused treatment.

Table 5: ED injury attendances by disposal method and injury group, October 2014 to September 2015^{3^}

Disposal method	Assault		Burns & scalds		Bites & stings		DSH		Fall		Other injury		RTC		Total	
	n	%	n	%	n	%	n	%	n	%	n	%	n	%	n	%
Discharged	759	60	331	42	436	70	165	49	3721	51	12240	64	1641	77	19293	61
Referral/follow-up	223	17	320	41	161	26	52	15	1710	24	5833	30	374	18	8673	27
Admitted	187	15	93	12	22	4	74	22	1655	23	1026	5	81	4	3138	10
Other	106	8	38	5	7	1	46	14	158	2	98	1	35	2	488	2
Total	1275	100	782	100	626	100	337	100	7244	100	19197	100	2131	100	31592	100

^Due to low numbers other injury includes electrical accident (n=35) and sports injury (n=13), and assault includes stabbing (n=40) records.

Table 6 shows the arrival method of attendances to North Manchester General Hospital ED. Almost seven in ten attendees arrived by private transport (67%), while nearly a fifth (17%) arrived by ambulance.

Table 6: ED injury attendances by arrival mode and month, October 2014 to September 2015¹

Arrival mode	Oct	Nov	Dec	Jan	Feb	Mar	Apr	May	Jun	Jul	Aug	Sep	Total	%
Private transport	1773	1530	1653	1517	1374	2015	2001	2080	1984	1902	1616	1699	21144	67
Ambulance	463	464	422	477	386	454	519	464	492	485	470	431	5527	17
Foot	169	108	115	105	91	71	125	137	200	137	157	215	1630	5
Taxi	101	101	81	53	<70	79	69	90	80	<70	80	61	932	3
Not recorded	61	59	63	59	40	156	58	74	66	78	84	104	902	3
Other	56	63	54	41	70	62	38	11	7	113	95	88	698	2
Public transport	53	28	34	<30	36	38	43	<35	44	54	<35	53	479	2
Police	12	<25	<30	14	9	22	25	26	18	20	18	<15	225	1
Work transport	7	***	***	***	***	13	11	***	6	***	***	***	55	0
Total	2695	2378	2451	2298	2079	2910	2889	2916	2897	2859	2555	2665	31592	100

ASSAULT ATTENDANCES

Between October 2014 and September 2015 there were 1,275 assault-related injury attendances to North Manchester General Hospital ED. Seven in ten assault attendees were male (70%) and over four in ten (44%) were aged between 20 to 34 years. Just over two fifths (43%) of assaults occurred in a public place (table 7).

Table 7: ED assault attendances by gender, incident location and age group, October 2014 to September 2015*

	Assault attendances (n=1,275)		All injury attendances (n=31,592)
	n	%	%
Gender			
Male	897	70	53
Female	378	30	47
Incident location			
Home	255	20	52
Other	322	25	20
Public place	551	43	13
Educational establishment	41	3	6
Work	76	6	4
Not recorded	30	2	5
Age group			
0 - 4	7	1	14
5 - 19	240	19	25
20 - 34	557	44	22
35 - 49	317	25	16
50 - 64	130	10	11
65 plus	24	2	13

* There were <5 records where the age was unknown; these have been omitted from the table.